

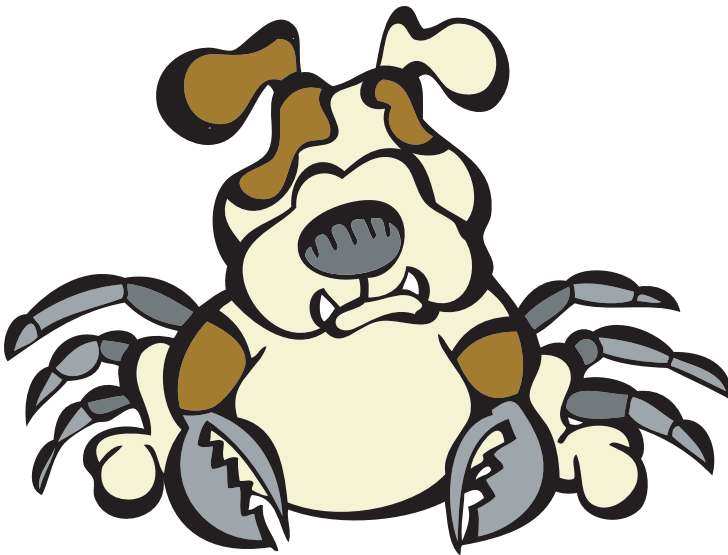


DOGOSCOPIES

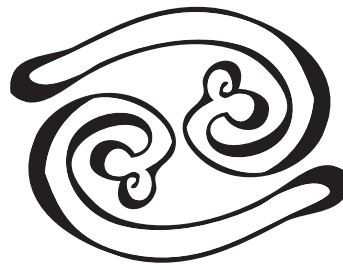
A Zodiac Guide to The Souls of Our Pooches

Cast of Characters

CANINECER THE CANCER June 21 - July 22



Sensitive Caninecer doggies should be handled with tender loving care. They crave attention, but beware - they can be a touch moody! Water lovers, they enjoy swimming and long walks on the beach with their people.



Characteristics:

- Moody
- Sensitive
- Shy
- Possessive
- Nurturing
- Strong-willed

